

PRODUCT INFORMATION PACKET

Model No: 145TBWD5326
Catalog No: N275
2,1800,TEFC,145TC,1/60/115/208-230
Washdown Duty



Regal and Marathon are trademarks of Regal Beloit Corporation or one of its affiliated companies.
©2019 Regal Beloit Corporation, All Rights Reserved. MC017097E



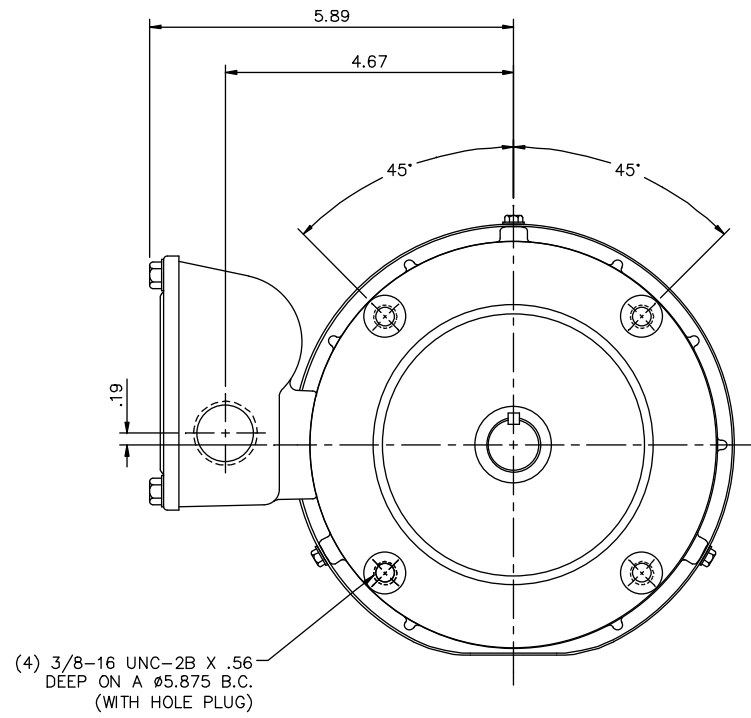
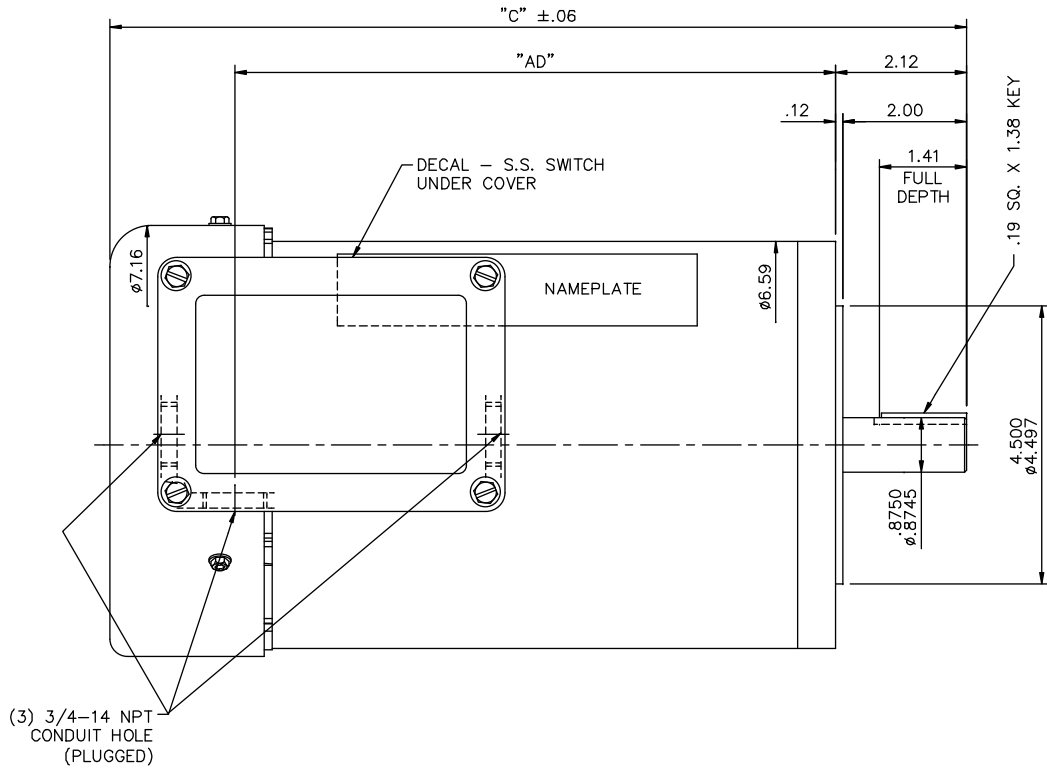
Nameplate Specifications

Output HP	2 HP	Output KW	1.5 kW
Frequency	60 Hz	Voltage	115/208-230 V
Current	20.0/10.2-10.0 A	Speed	1740 RPM
Service Factor	1.15	Phase	1
Efficiency	80 %	Duty	Continuous
Insulation Class	F	Design Code	L
KVA Code	J	Frame	145TC
Enclosure	Totally Enclosed Fan Cooled	Overload Protector	No
Ambient Temperature	40 °C	Drive End Bearing Size	6205
Opp Drive End Bearing Size	6203	UL	Recognized
CSA	Y	CE	Y
IP Code	55		

Technical Specifications

Electrical Type	Capacitor Start Capacitor Run	Starting Method	Across The Line
Poles	4	Rotation	Selective Counterclockwise
Mounting	Round	Motor Orientation	Horizontal
Drive End Bearing	Ball	Opp Drive End Bearing	Ball
Frame Material	Stainless Steel	Shaft Type	T
Overall Length	14.87 in	Frame Length	9.50 in
Shaft Diameter	0.875 in	Shaft Extension	2.12 in
Assembly/Box Mounting	F1 Only		
Outline Drawing	028623ME-950	Connection Diagram	005314.03ME

This is an uncontrolled document once printed or downloaded and is subject to change without notice. Date Created: 07/16/2019



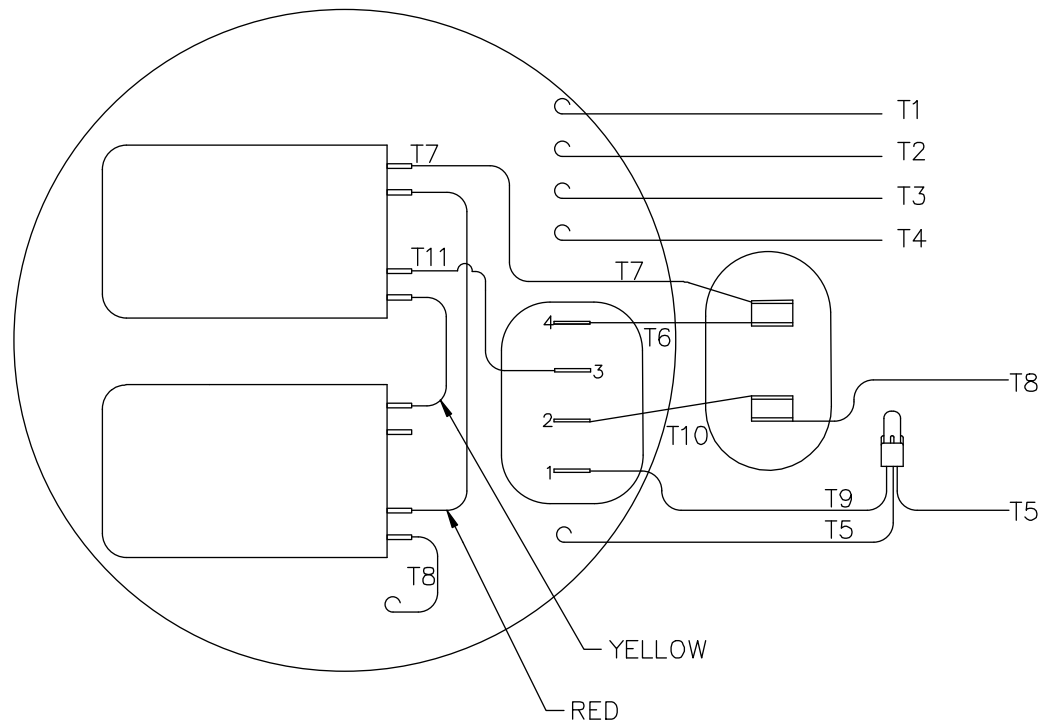
DASH NO.	"C"	"AD"
800	13.37	9.23
850	13.87	9.73
900	14.37	10.23
950	14.87	10.73

MAXIMUM FACE RUNOUT TO BE .004 T.I.R.
 MAXIMUM PILOT ECCENTRICITY .004 T.I.R.
 PERMISSIBLE SHAFT RUNOUT .002 T.I.R.

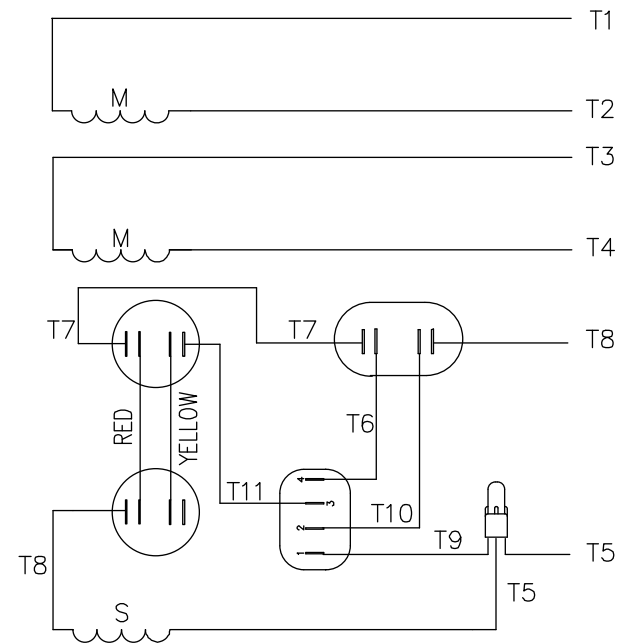
ALL-STAINLESS
 VITON CONDUIT BOX & COVER GASKETS
 VITON O-RINGS IN ENDBELL RABBETS & UNDER THRU BOLT HEADS
 VITON SHAFT SEALS
 BREATHING PLUGS IN CONDUIT BOX & L.E. ENDBELL
 ALL STAINLESS STEEL CONSTRUCTION

NO.		REVISION	BY & DATE	CHK	ANG	±1/2'	FINISH	TOLERANCES UNLESS SPECIFIED			DRAWN	LST	8/21/13
								DEC.	INCHES		CHK		
								.X	±.1		APPD		
								.XX	±.03		TITLE	SCALE	1=2
								.XXX	±.005	REF			
								.XXXX	±.0005	MAT'L.	FMF		
										PREV			
THIS DRAWING IN DESIGN AND DETAIL IS OUR PROPERTY AND MUST NOT BE USED EXCEPT IN CONNECTION WITH OUR WORK ALL RIGHTS OF DESIGN AND INVENTION ARE RESERVED THIS IS AN ELECTRONICALLY GENERATED DOCUMENT - DO NOT SCALE THIS PRINT				RFP	ANG	±1/2'	FINISH	CAD FILE	028623	SIZE	DRAWING NO.	REV.	
				DIST				B	028623ME				

VIEW FROM OUTSIDE OF MOTOR AT SWITCH END.



LINE LEADS



	ROTATION FACING LEAD END	L1	L2	JOIN & INSULATE
HIGH VOLT	C.C.W.	T1	T4, T5	T2, T3 T8
	C.W.	T1	T4, T8	T2, T3 T5
LOW VOLT	C.C.W.	T1, T3 T8	T2, T4 T5	
	C.W.	T1, T3 T5	T2, T4 T8	

		TOLERANCES UNLESS SPECIFIED		DRAWN LST 8/21/13					
		DEC.	INCHES	CHK					
		.X	±.1	APPD					
		.XX	±.01	SCALE 1=1					
		.XXX	±.005	REF					
		.XXXX	±.0005	FMF					
NO.	REVISION	BY & DATE	CHK	ANG	±1/2'	FINISH	TITLE		PREV
			RFP			CAD FILE	EXTERNAL WIRING DIAGRAM TYPE "K" W/O PROTECTOR		
			DIST			00531403	DECAL - 004012		
THIS DRAWING IN DESIGN AND DETAIL IS OUR PROPERTY AND MUST NOT BE USED EXCEPT IN CONNECTION WITH OUR WORK ALL RIGHTS OF DESIGN AND INVENTION ARE RESERVED THIS IS AN ELECTRONICALLY GENERATED DOCUMENT - DO NOT SCALE THIS PRINT						SIZE	DRAWING NO.		REV.
						A	005314-03ME		



MARATHON ELECTRIC CORPORATION
TYPICAL PERFORMANCE CURVE for AC MOTOR

Customer

Curve at

230
60
2

Volts
HZ
HP

HP 2.00

PHASE 1

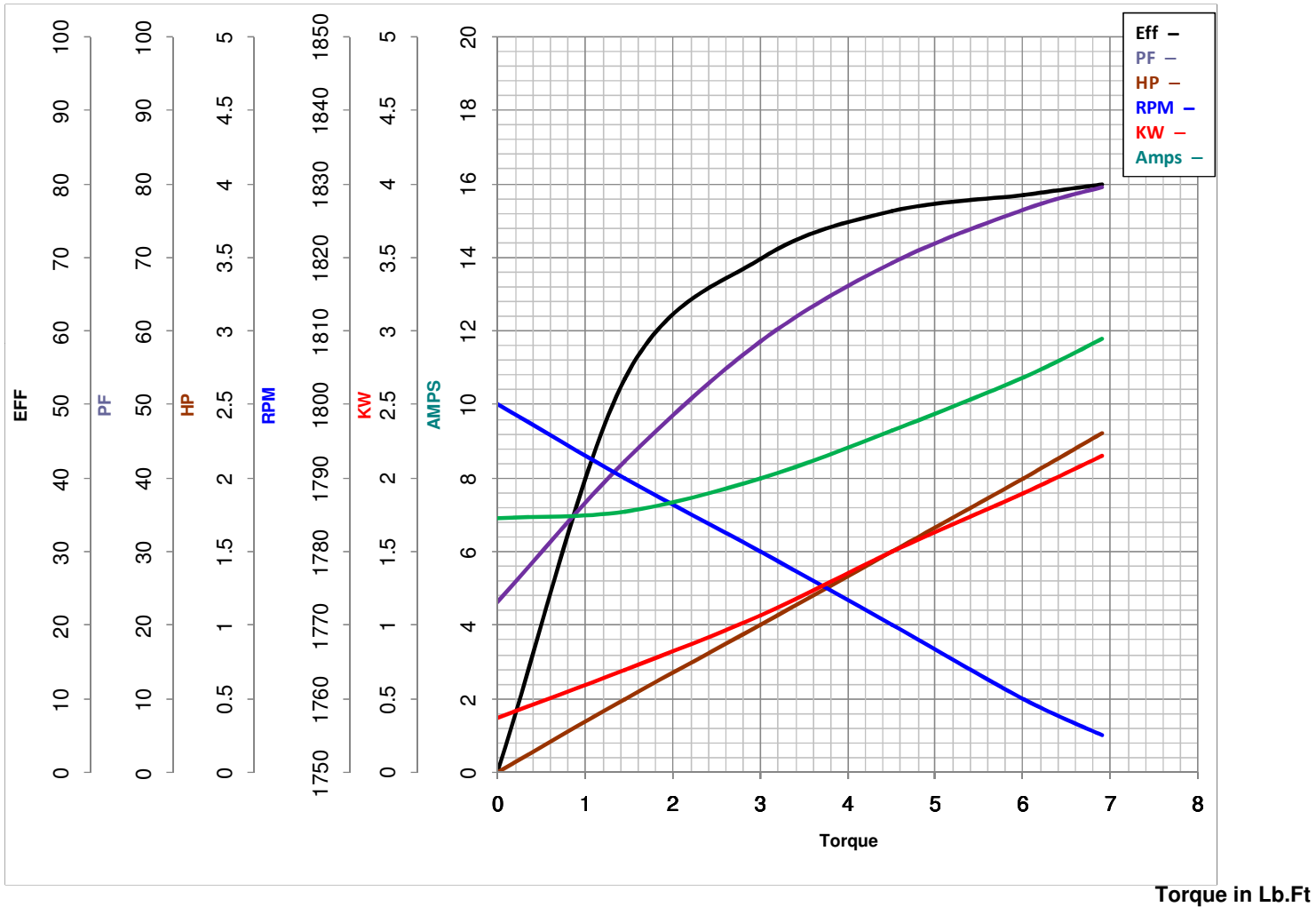
Model No 145TBWD5326

VOLTS 115/208-230

Catalog No N275

HZ 60

RPM 1740



FL TORQUE	<u>6</u>	Lb.Ft	FL AMPS	<u>20/10.2-10</u>
BD TORQUE	<u>18.0</u>	Lb.Ft	PU TORQUE	<u>14.4</u> Lb.Ft
LR TORQUE	<u>19</u>	Lb.Ft	LR AMPS	<u>74.5</u>
WINDING	K634323-		Date	